

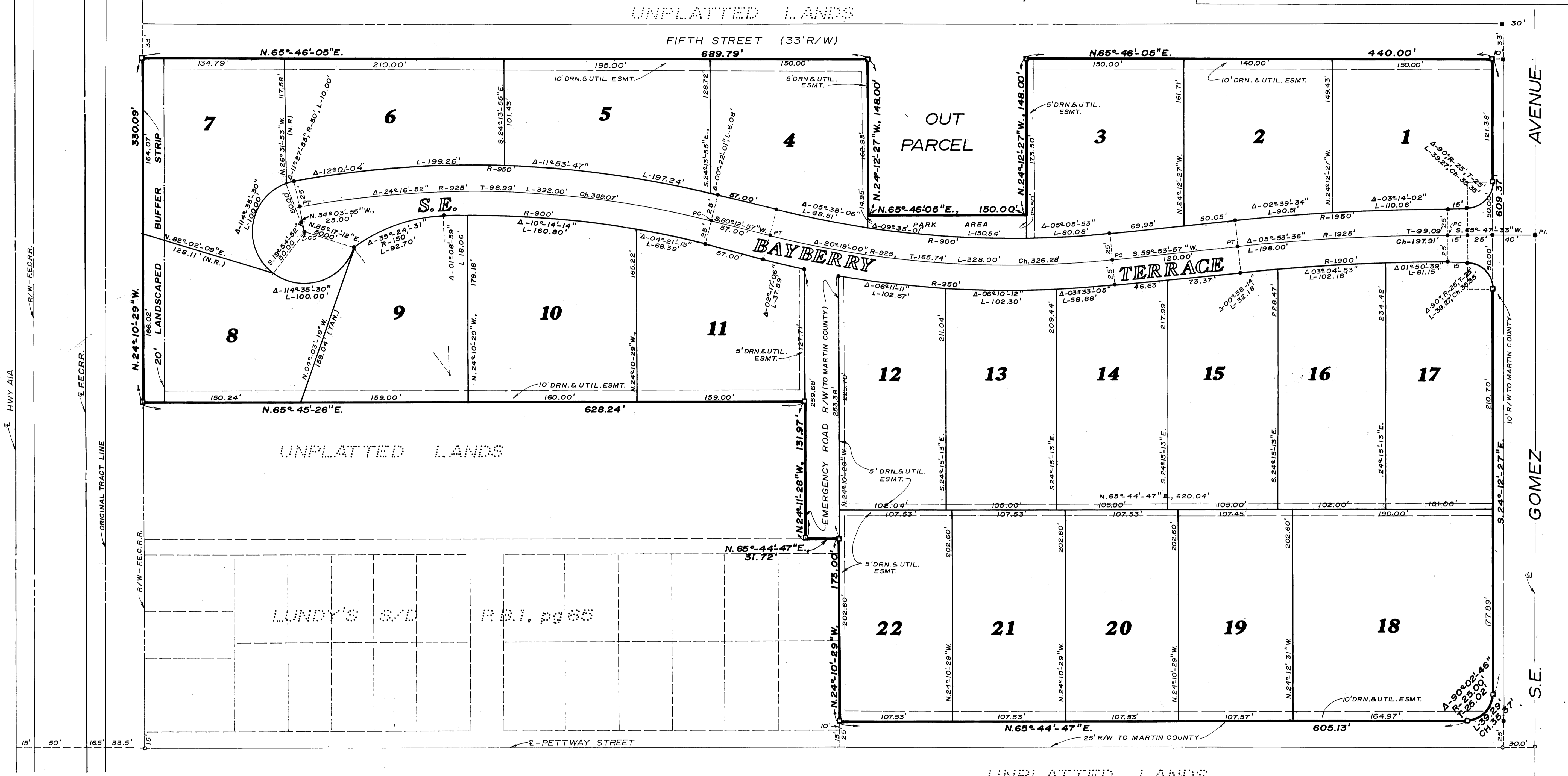
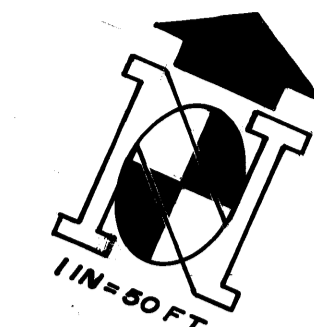
WOODMERE PINES

BEING A PART OF THE GOMEZ GRANT, LOCATED IN MARTIN COUNTY, FLORIDA.

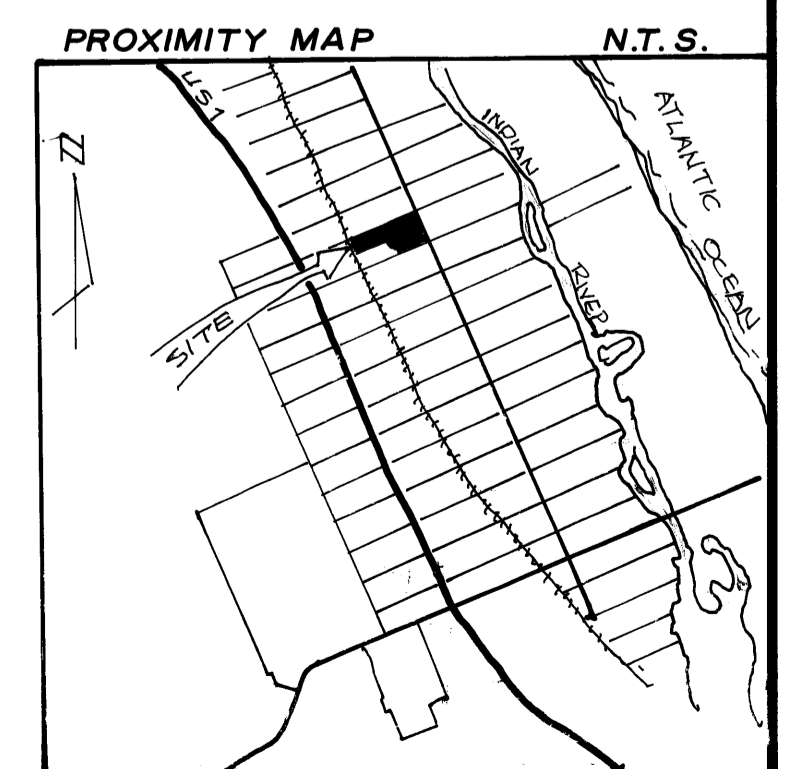
PLAT BOOK 7, PAGE 63

CLERK'S RECORDING CERTIFICATE
 I, LOUISE V. ISAACS, CLERK OF THE CIRCUIT COURT OF MARTIN COUNTY, FLORIDA, DO HEREBY CERTIFY THAT THIS PLAT WAS FILED FOR RECORD IN PLAT BOOK 7, PAGE 63, PUBLIC RECORDS OF MARTIN COUNTY, FLORIDA, ON THIS DAY OF _____, 1978.

LOUISE V. ISAACS,
 CLERK OF CIRCUIT COURT,
 MARTIN COUNTY, FLORIDA
 FILE No. _____ BY: _____ Deputy Clerk



- NOTES:**
- DENOTES PERMANENT CONTROL POINT (P.C.P.)
 - DENOTES PERMANENT REFERENCE MONUMENT (P.R.M.)
 - NO LOT SPLITS EXCEPT TO CREATE LARGER LOTS.
 - NO OBSTRUCTIONS IN EMERGENCY RIGHT-OF-WAY
 - ALL LOTS SHOWN ARE 1/2 ACRE OR LARGER.
 - ACCESS TO LOTS SHOWN HEREON IS TO BE FROM INTERNAL ROADS ONLY. (NOT TO INCLUDE LOTS 18 THROUGH 22)



J & J BLUEPRINTERS